

Rochester Area School Bus Safety Road-eo

Pre-trip Inspection

8 minute time limit

Contestant # \_\_\_\_\_ Type: Van      Conventional      Transit  
(please circle one)

**Judges Instructions: Place a circle around each infraction.**

Failure to mention or explain:

CDL brake test..... 1.....NOT REQUIRED FOR VAN DRIVERS

Engine leaks ..... ½      Heaters, fans, defrosters ..... ½

Tires, lug nuts, & rims ..... ½      Steering wheel ..... ½

Head lights (high/low) ..... ½      Horn ..... ½

Turn signals ..... ½      Windshield wipers/ fluid ..... ½

Four-way flashers ..... ½      Gauges ..... ½

Red flashers ..... ½      Emergency exit lights ..... ½

Yellow Jersey lights ..... ½      Emergency doors ..... ½

Destination signs, front & rear ..... ½      Emergency windows ..... ½

Clearance lights ..... ½      Roof hatches ..... ½

Tail lights ..... ½      Seats & backs are secure..... ½

License plate light ..... ½      Triangular reflectors on board ..... ½

Parking lights ..... ½      First aid kit ..... ½

Step well light working ..... ½      Fire extinguisher on board ..... ½

Brake lights working ..... ½      Cross over mirrors ..... ½

Back-up lights working ..... ½      West Coast mirrors ..... ½

Exhaust pipe secure ..... ½      All windows (glass) unbroken ..... ½

Reflectors ..... ½      Inspection sticker valid ..... ½

**8 MINUTE TIME LIMIT**

Total time: \_\_\_\_\_ : \_\_\_\_\_  
(minutes)                      (seconds)

Judge: \_\_\_\_\_

DO NOT WRITE IN THIS BOX

Maximum score:      10.0

Demerits:              \_\_\_\_\_

Final score:            \_\_\_\_\_

# Rochester Area School Bus Safety Road-eo

## Student Loading

Contestant # \_\_\_\_\_ Type: **Van**      **Conventional**      **Transit**  
(Please circle one)

**Judges Instructions:**      Place a circle around each infraction.

Failure to:



- Activate yellow warning lights..... 2
- Apply parking brake, transmission in neutral (van in park)..... 2
- Check all mirrors including crossovers..... 2
- Check that student is seated before moving ..... 2
- Activate turn signal..... 2
- Bus rolls while student is loading..... 10
- Wheels touch the curb ..... 10

**DO NOT WRITE IN THIS BOX**

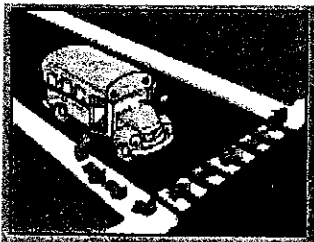
Maximum score:      10.0

Demerits:                      \_\_\_\_\_

Final Score                      \_\_\_\_\_

## Student Unloading

Failure to:



- Activate yellow warning lights..... 2
- Set the parking brake, transmission in neutral (van in park)...2
- Check all mirrors for traffic before opening door..... 2
- Instruct the student to walk 10 feet in front of bus and wait for signal to cross ..... 2
- Check all mirrors and give Universal signal to cross..... 2
- Wait until the student reaches the safety box .....10
- Bus rolls during unloading ..... 10

**DO NOT WRITE IN THIS BOX**

Maximum score:      10.0

Demerits:                      \_\_\_\_\_

Final score:                      \_\_\_\_\_

Judge: \_\_\_\_\_

# Rochester Area School Bus Safety Road-eo

## Distance From Curb

Contestant # \_\_\_\_\_

Type: Van

Conventional

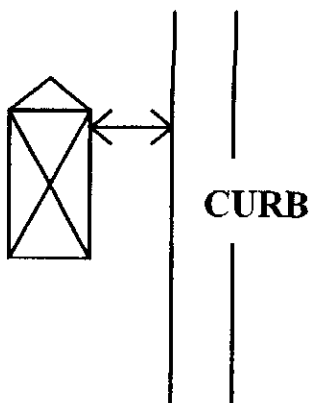
Transit

(Please circle one)

The contestants will be evaluated on their ability and skill to come as close as possible to the curb when picking up a student without touching the curb itself.

### Judges Instructions:

Place a circle around each infraction.



0" to 8" from the curb ..... 0

8" to 16" from the curb ..... 2

16" to 24" from the curb ..... 4

More than 24" from the curb ..... 6

Touch the curb ..... 10

Judge: \_\_\_\_\_

<b>DO NOT WRITE IN THIS BOX</b>	
Maximum score:	10.0
Demerits:	_____
Final score:	_____

# Rochester Area School Bus Safety Road-eo

## 50' Straight Line

Contestant # \_\_\_\_\_

Type: Van

Conventional

Transit

(Please circle one)

The contestant is required to drive all right wheels, front and rear, between 2 rows of tennis balls without stopping prior to or within the station and without knocking over any of the tennis balls.

### Judges Instructions:

Place a circle around each infraction.

### Knocked over tennis ball on either side of set



1<sup>st</sup> set of tennis balls ..... 2



2<sup>nd</sup> set of tennis balls ..... 2



3<sup>rd</sup> set of tennis balls ..... 2



4<sup>th</sup> set of tennis balls ..... 2



5<sup>th</sup> set of tennis balls ..... 2

Stopped before entering station .... 1

1 demerit for each stop within the station ..... \_\_\_\_\_

Judge: \_\_\_\_\_

<b>DO NOT WRITE IN THIS BOX</b>	
Maximum score:	10.0
Demerits:	_____
Final score:	_____

# Rochester Area School Bus Safety Road-eo

## Railroad Crossing

Contestant # \_\_\_\_\_

Type: Van

Conventional

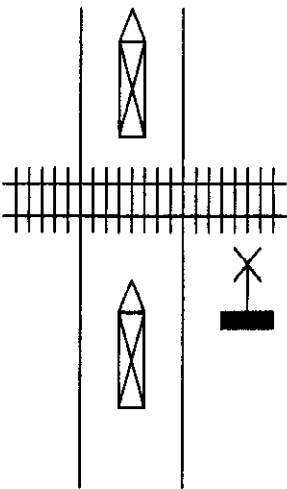
Transit

(Please circle one)

The contestant will be evaluated as to their knowledge of the laws and proper procedures to be followed at a railroad crossing.

### Judges Instructions:

Place a circle around each infraction.



Failure to activate 4-way flashers ..... 2

Improper use of yellow flashing lights ..... 2

Improper use of red flashing lights ..... 2

Failure to stay to the right side of the road ..... 2

Did not stop front of bus 15' to 50' before tracks....2

Failure to open front door, look and listen ..... 2

Failure to open driver's window, look and listen ...2

Did not keep bus halted until cross arms are in up position and red lights have shut off ..... 2

Failure to stop the bus so that the back end is at least 15 feet or more past the last track ..... 2

Contestant stopped with the rear of the bus over the tracks .. 10

Judge: \_\_\_\_\_

<b>DO NOT WRITE IN THIS BOX</b>	
Maximum score:	10.0
Demerits:	_____
Final score:	_____

# Rochester Area School Bus Safety Road-eo

## Serpentine

Contestant # \_\_\_\_\_

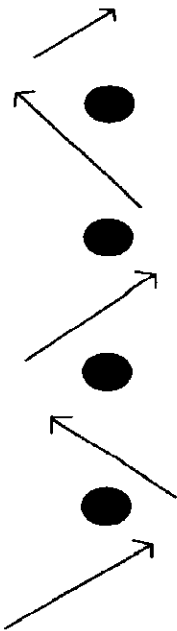
Type: Van

Conventional  
(Please circle one)

Transit

The contestant must maneuver in and around 4 barrels in a continuous forward movement starting to the right side of the first barrel.

### Judges Instructions:



Place a circle around each infraction.

Touch barrel #1 ..... 2

Touch barrel # 2 ..... 2

Touch barrel # 3 ..... 2

Touch barrel # 4 ..... 2

Stopped before entering station ..... 1

1 demerit for each stop within  
the station..... \_\_\_\_\_

Entered from wrong side .....10

Backed up within the station ..... 10

Judge: \_\_\_\_\_

<b>DO NOT WRITE IN THIS BOX</b>	
Maximum score:	10.0
Demerits:	_____
Final score:	_____

Off-Set Alley

Contestant # \_\_\_\_\_

Type: Van

Conventional

Transit

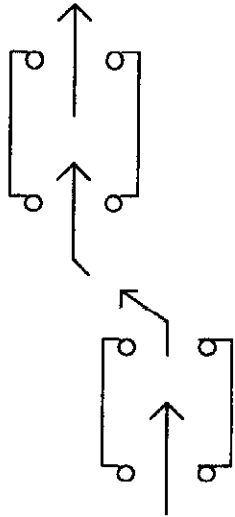
(Please circle one)

The contestant is required to drive their vehicle through the off-set alley with continuous forward movement and without knocking any of the balls down.

Judges Instructions:

Place a circle around each infraction.

Knocked over tennis ball on either side of set



Dropped ball ..... 2

Dropped ball ..... 2

Dropped ball ..... 2

Dropped ball ..... 2

Dropped ball ..... 2

1 demerit for each stop  
within the station ..... \_\_\_\_\_

Striking any barrier..... 10

Judge: \_\_\_\_\_

<u>DO NOT WRITE IN THIS BOX</u>	
Maximum score:	10.0
Demerits:	_____
Final score:	_____

Rear Alley Dock

Contestant # \_\_\_\_\_

Type: Van

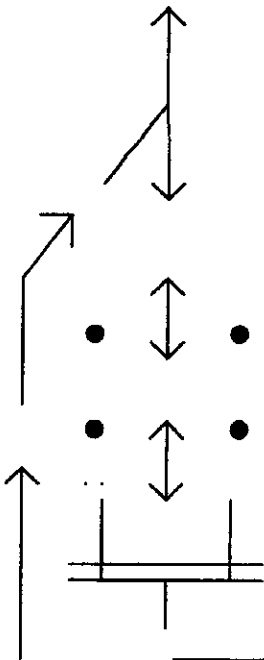
Conventional

Transit

(Please circle one)

The contestant is required to back into a narrow space without touching the cones or the side barriers and coming as close as possible to the rear barrier in one continuous motion. The contestant must apply the parking brake and blow the horn when ready for measurement. The judge will signal the driver to proceed on.

Judges Instructions: Place a circle around each infraction.



1 demerit for each cone touched ..... \_\_\_\_\_

1 demerit for each stop while backing ..... \_\_\_\_\_

Distance from rear barrier:

0" to 8" ..... 0

8" to 16" ..... 4

16" to 24" ..... 6

24" or more ..... 8

Touch any barrier ..... 10

Judge: \_\_\_\_\_

<b><u>DO NOT WRITE IN THIS BOX</u></b>	
Maximum score:	10.0
Demerits:	_____
Final score:	_____

Diminishing Clearance

Contestant # \_\_\_\_\_

Type: Van

Conventional

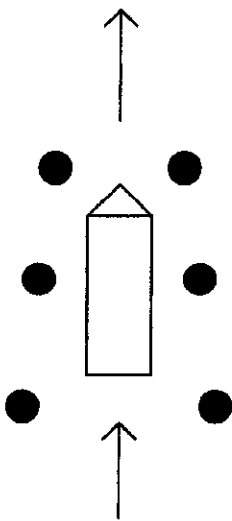
Transit

(Please circle one)

The contestant must drive through a narrowing alley without stopping prior to and within the station and without knocking down any balls.

Judges Instructions:

Place a circle around each infraction.



- 1<sup>st</sup> ball ..... 2
- 2<sup>nd</sup> ball..... 2
- 3<sup>rd</sup> ball..... 2
- 4<sup>th</sup> ball ..... 2
- 5<sup>th</sup> ball ..... 2
- Stopped before entering station .... 1
- 1 demerit for each stop within  
the station ..... \_\_\_\_\_

Judge: \_\_\_\_\_

DO NOT WRITE IN THIS BOX

Maximum score:            10.0

Demerits:                    \_\_\_\_\_

Final score:                \_\_\_\_\_

## Stop Line

Contestant # \_\_\_\_\_

Type: Van

Conventional

Transit

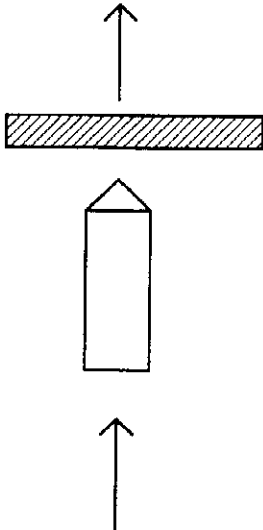
(Please circle one)

The contestant must forward in a continuous motion toward a stop line and bring the bus to a smooth stop as close to the line as possible without touching the line. The contestant must set the parking brake and blow the horn for the measurement.

### Judges Instructions:

Place a circle around each infraction.

Remember to measure from the part of the bus that is closest to the stop line. For example, if there is a stop arm, measure from the stop arm... not from the bumper.



0" to 3" from stop line ..... 0

3" to 6" from stop line ..... 2

6" to 9" from stop line ..... 4

Over 9" from stop line.....6

Failed to set parking brake ..... 1

Failed to blow horn ..... 1

1 demerit for each stop before brake is set \_\_\_\_\_

Touched or went over the line ..... 10

Missed station altogether ..... 10

Judge: \_\_\_\_\_

**DO NOT WRITE IN THIS BOX**

Maximum score:            10.0

Demerits:                    \_\_\_\_\_

Final score:                 \_\_\_\_\_

Right Hand Turn

Contestant # \_\_\_\_\_

Type: Van

Conventional  
(Please circle one)

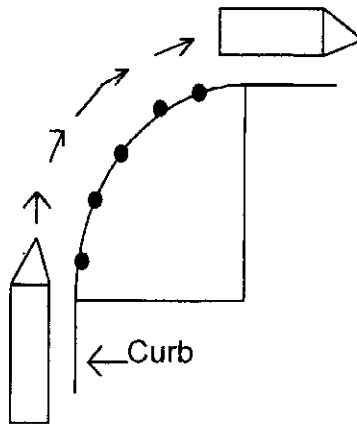
Transit

The right hand turn is designed to determine the driver's ability to properly position the bus to prepare for and execute the turn without touching the curb or going into oncoming traffic.

**Judges Instructions:** Place a circle around the one color seen closest to the outside of the tire and farthest from the curb while both entering and exiting the turn.

Entering the turn:

- White .....0
- Yellow ..... 2
- Green ..... 4
- Blue ..... 6
- Red ..... 8
- Black ..... 10



Exiting the turn:

- White ..... 0
- Yellow ..... 2
- Green .....4
- Blue ..... 6
- Red ..... 8
- Black .....10

Failed to use right turn signal ..... 2

1 demerit for each stop while turning .. \_\_\_\_\_

Touched the curb or cones .....10

Judge: \_\_\_\_\_

**DO NOT WRITE IN THIS BOX**

Maximum score:            10.0

Demerits:                    \_\_\_\_\_

Final score:                 \_\_\_\_\_

General Procedures

Contestant # \_\_\_\_\_ Type: Van      Conventional      Transit  
(Please circle one)

**Timing on the course:** Start the watch when the driver leaves the starting line. Do not talk to the driver unless telling him to stop or start. Stop the watch ONLY if you request the driver to stop and then indicate at which station (s). \_\_\_\_\_  
Otherwise, stop the watch at the end of the course when the driver sets the parking brake and enter the time elapsed at the bottom of the sheet.

- Judges Instructions:** Place a circle around each infraction.
- Failure to:**
- Turn on headlights ..... 5
  - Fasten seatbelt ..... 5
  - Test service brake within 50 feet ..... 5
  - Improper braking on the course .....1
  - Striking an object not specified ..... 1
  - Unreasonable speed on the course .....1
  - Maintain proper driving position and hand position on the wheel..... 1
- At the rear alley dock:** Failure to blow horn before backing ..... 1
- Fails to apply parking brake for measurement .....1
- Secure vehicle:** Fails to set parking brake, transmission in neutral..1  
(van in park)
- Failed to do or explain a post trip..... 5

**Time:** \_\_\_\_\_ : \_\_\_\_\_  
(MINUTES) (SECONDS)

**Judge:** \_\_\_\_\_

DO NOT WRITE IN THIS BOX

Maximum score:      27.0

Demerits:      \_\_\_\_\_

Final score:      \_\_\_\_\_